

# Stretcher Mattress

High grade mattress with excellent durability and pressure relieving comfort for patient stretchers.

## Key Benefits

- Thicknesses that aid egress and imaging
- Protran mattress - single foam layer
- Premia mattress - 3 effective foam layers
- Premia Barituff mattress - 4 support layers (110mm thick 60 - 350kg, 150mm thick 45 - 400kg therapeutic support loads)
- Welded 'double coated' stretch cover
- Non-slip base design
- Permanent care label
- New technology fluid proof zip (excludes 75mm mattress)
- MADE IN AUSTRALIA

## Product Code

- 100mm Protran Mattress; MPT-CM-100-PTP
- 100mm Premia Mattress; MPT-CM-100-PRP
- 110mm Barituff Mattress; MPT-CM-110-PRB
- 150mm Barituff Mattress; MPT-CM-150-PRB

## Mattress Size

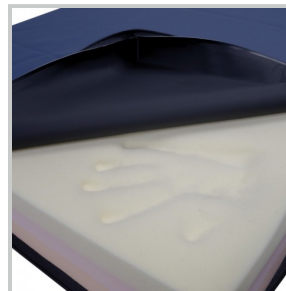
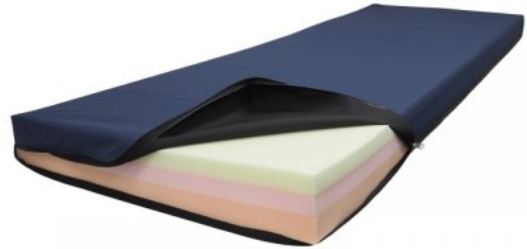
- Standard; 680 W x 1900mm L
- Narrow; 570mm W x 1900mm L
- Wide; 830mm W x 1900mm L
- Barituff; 980mm W x 1900mm L

## Mattress Shape

- Square Ends (electric stretcher)
- Truncated End (hydraulic stretcher)

## Why Buy

The Contour Premia mattress has been designed to optimize patient weight capacity and comfort by using a selection of quality foam layers to help in both preventing patients from bottoming and pressure reduction. The Contour Protran mattress is recommended for short stay patients with a single medium density foam section to facilitate special patient transfers or clear imaging.



Pressure care design



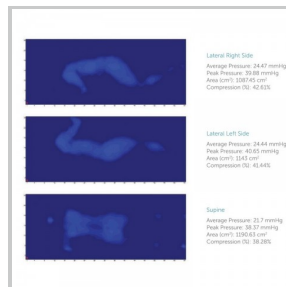
Welded cover



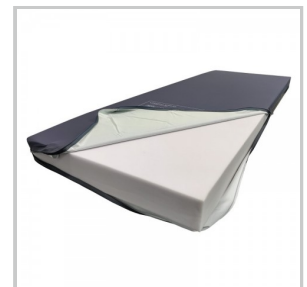
Sealed zip



Care label



Pressure mapped



Protran

v-07102022

# MODSEL

Making a world of difference.

modsel.com ▶