

# MAG700

## Magnifying Examination Light

The **DARAY**® MAG700 LED light is a high-quality circular magnifying light featuring an LED light source that enhances colour contrasts, whilst reducing shadow.

With smooth contours and dust cover to protect the lens, the MAG700 LED magnifying light is perfect for a variety of applications. This model can be supplied with the lens of your choice; choose from three different strengths.

This general-purpose magnifier carries steady movement to a reach of 800mm, and the light head has triple-axis rotation for ease of positioning.

A range of interchangeable mounting options extends its flexibility.

- LED technology (80 LED lamps)
- Low total cost of ownership
- Robust with long lamp life
- Slim design
- 3, 6 and 12 dioptre options
- 800mm reach
- Fully enclosed spring-balanced arm
- Various mounting options available
- Lens cover



Further mounting options available - call to discuss

### What is 'Dioptre'?

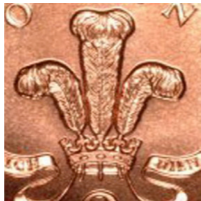
Dioptre (Value)	Equivalent to... (Magnification)	Size increase... (%)
2	1.5x	150%
3	1.75x	175%
4	2x	200%
5	2.25x	225%
6	2.5x	250%
7	2.75x	275%
8	3x	300%
9	3.25x	325%
10	3.5x	350%
11	3.75x	375%
12	4x	400%

You will often see the term 'dioptre' used when searching for a magnifier. This quite simply refers to the amount of curvature in the lens. The higher the dioptre value, the more powerful the magnification, and the greater curvature of the lens. The term 'dioptre' directly identifies the refractive capacity of a lens, which is different from the term 'magnification'. Magnification is the degree to which the viewed object is enlarged, this is usually expressed by the symbol 'x', which denotes the viewed size of the object in relationship to its actual size. The table on the left shows the equivalent magnification matching each dioptre value.

When choosing your dioptre, it is important to consider how much magnification is required for the intended application. Are you dealing with micro components, or foreign object removal? Either way, ensure the strength matches your needs.



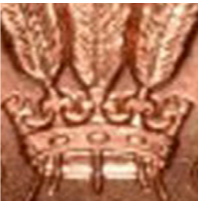
Actual size



As viewed under 3-dioptre lens



As viewed under 6-dioptre lens



As viewed under 12-dioptre lens

### Products available

MAG703LD	3-Dioptre version, with Desk Clamp
MAG703LW	3-Dioptre version, with Wall Bracket
MAG703LM*	3-Dioptre version, with Mobile Base
MAG706LD	6-Dioptre version, with Desk Clamp
MAG706LW	6-Dioptre version, with Wall Bracket
MAG706LM*	6-Dioptre version, with Mobile Base
MAG712LD	12-Dioptre version, with Desk Clamp
MAG712LW	12-Dioptre version, with Wall Bracket
MAG712LM*	12-Dioptre version, with Mobile Base

\*Please note the mobile version has a restricted range of movement to maintain its balance

### Specifications

Light Source	LED
Number of LED's	80
Average Working Life	>25,000 hours
Light Head Diameter	200mm
Lens Diameter	125mm
Magnification options	3-Dioptre / 6-Dioptre / 12-Dioptre
Warranty Period	3 Years (UK only)
Input Voltage	100-240 VAC / 50~60 Hz
Output Voltage	24V DC / 1A
NHS E-Class Code	FBU, FKR, KBB
Commodity Code	9018 908400
GMDN Code	12276

www.daray.com  
Tel: 0800 804 8384 Email: info@daray.co.uk  
Edison House, Robian Way, Swadlincote, DE11 9DH

**DARAY**®  
Medical

